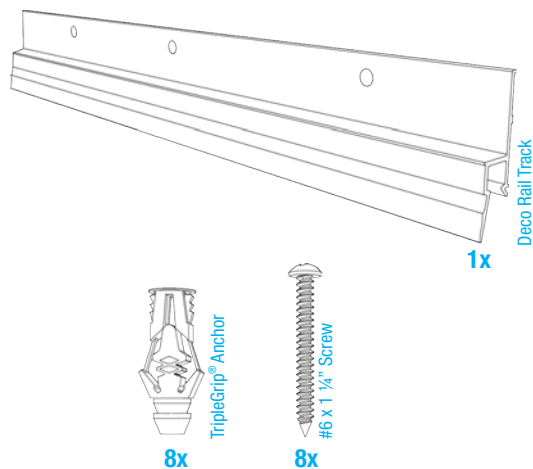




### Deco Rail Track A1090HF



#### PARTS LIST



#### Warning

The track is supplied with screws and TripleGrip® plastic screw anchors that are suitable for mounting the track to gypsum panels, lathe and plaster, concrete, masonry block, etc. All holes in track should be filled with a suitable screw/fastener combination.

Property damage and personal injuries can occur from track mount failure. To prevent such failure, it is the responsibility of the installer to select a suitable fastener for a particular installation.

### 1 Check Walls

- The wall should be straight, Deco Rail Track is rigid and does not easily bend.
- Normal track orientation is horizontal.

### 2 Measure

- Measure your walls/ceilings. The Deco Rail Track is mounted directly behind crown molding. Install your tracks wall-to-wall.

### 3 Cut or Trim Track

- Cut track as needed and remove all burrs.



#### TIP

Cut the track with a hack saw and miter box or power miter saw with proper blade.



#### TIP

To join two tracks at an inside/outside 90° corner, cut both ends at 45° to have a perfect fit.

*Straight Wall*

*Non-linear Wall*

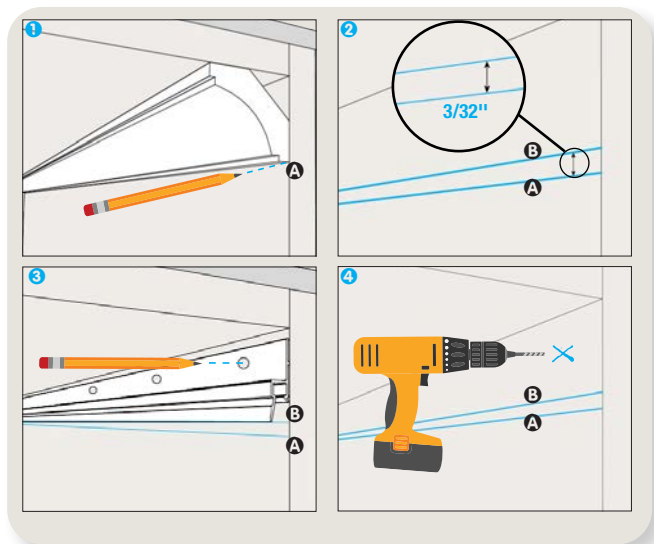
*Ceiling*

*Wall*

*Proper Blade*

*Top View*

45°



## 4 Mounting Track

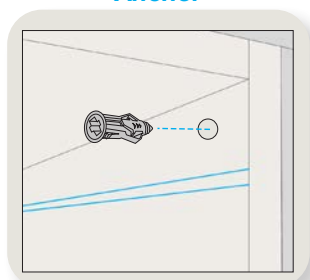
- 1 Place your molding where it will be installed and draw a small line just below it **A**.
- 2 Calculate 3/32" above the line drawn **A**. This will be the positioning of the bottom of the Deco Rail Track. Draw a line **B** at this location.
- 3 Align the bottom of the Deco Rail Track on line **B** and mark mounting holes.
- 4 Use a stud finder or drill 1/16" pilot holes to probe for wall structure.



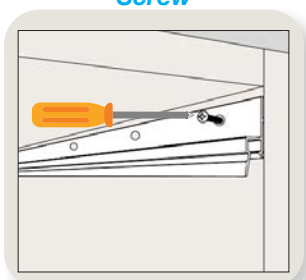
### TIP

Use a level to make certain track is level.

Anchor



Screw



## 5 Molding Installation

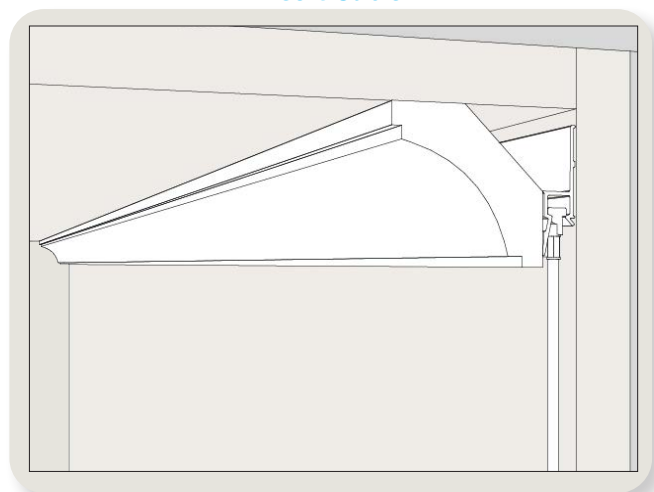
- If no structure is present, expand the hole to 1/4" and insert supplied anchors.
- Fasten track to prepared holes with supplied fasteners.

Glue



Crown Molding

Insert Cable



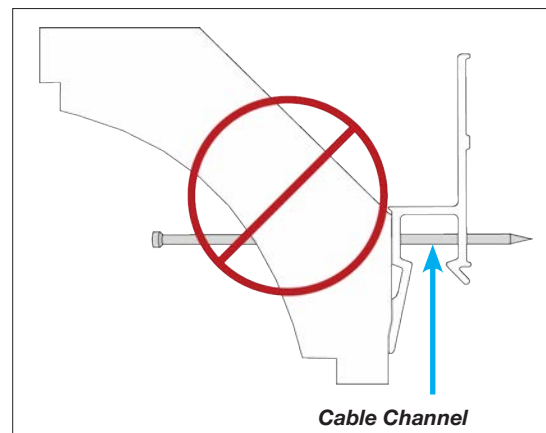
## 6 Molding Installation

- Apply glue (not included) along the entire molding length and fix it to the bottom of the Deco Rail Track installed on the wall. Fasten the molding on the ceiling to prevent clogging of the cable channel on the Deco Rail Track.



### IMPORTANT

Only use glue to fasten molding to the track. DO NOT fasten molding using a nail or pin through the cable channel of the Deco Rail Track. Nails or pins could obstruct the groove where the cables are inserted (cable channel shown below).



Cable Channel