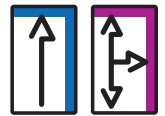
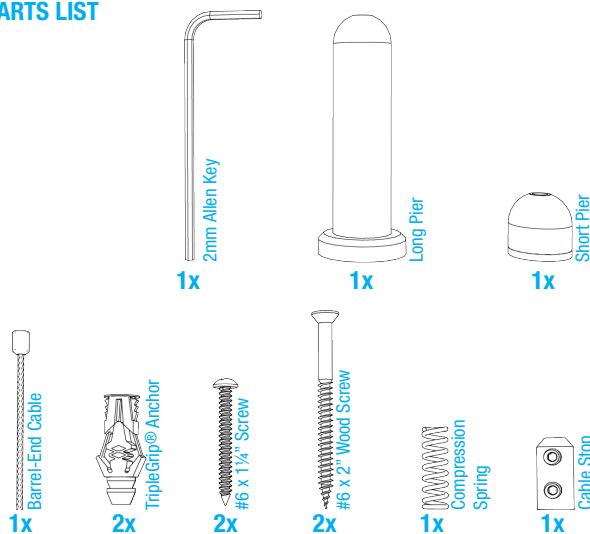




## Fixed Piers Set

### PARTS LIST



### Warning

To achieve maximum weight capacity, this assembly must be installed by fastening into structural ceiling with the appropriate fastener and the fastener is engaged 1" or more. It is the responsibility of the installer to select the correct faster for a particular installation as actual capacity is dependent upon the installation. Failure to do so may cause property damage and/or personal injury.



### NOTE

AS Hanging Display Systems offers a "Cable Trim Kit" (PN U5150AA) to cut cables without fraying them. It may be very helpful in this installation.

## 1 Background

- Fixed Piers must only be installed so that the cable is parallel to the Piers and in a vertical orientation.
- Select your fasteners carefully. Your installation will only be as strong as your upper point of attachment.
- Under no circumstance shall the upper Pier be mounted directly to suspended ceiling. However, it would be appropriate to pass the cable through a tiny hole in the tile and attach the upper Pier to structure above the suspended ceiling.

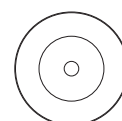
## 2 Mount Upper & Lower Pier Bases

- Mark the intended location of the upper Pier. Use a structural detector or drill 1/16" pilot holes to probe for ceiling joists. If no structure is present, expand the hole to 1/4" and insert supplied anchors. Then, transfer that mark to the lower matching location, perhaps with a plumb bob or a laser.
- Attach upper and lower Pier Bases, to their respective mark. Lower Pier always consists of the longer body element.

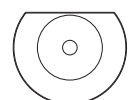


### NOTE

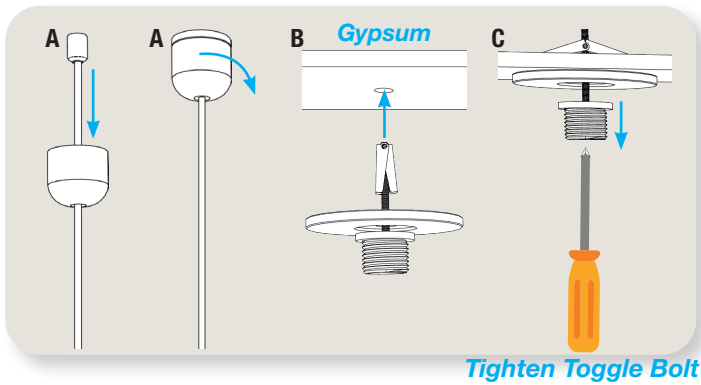
If attachment is made to gypsum panel or other soft material, use a Mounting Plate (PN U5529,U5531) sold separately.



U5529



U5531

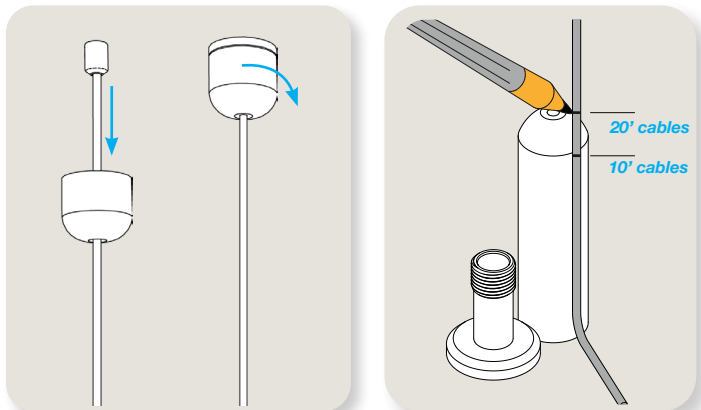
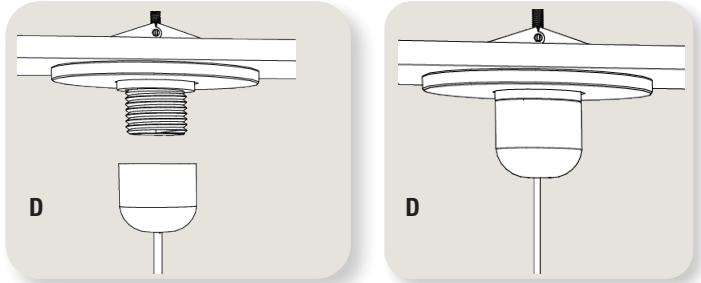
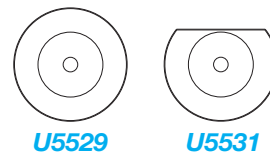


### 3 Assembly with Mounting Plate

- Insert Barrel-End Cable through upper Pier Body and thread Pier Body over Pier Base. Finger tighten. (A)
- If attachment is made to gypsum panel or other soft material, use a Mounting Plate (with spring toggle wing bolt). (B)
- Expand the hole to fit in the toggle wing bolt. Separate the bolt from the wings and pass the bolt through the Pier base, then the Mounting Plate, and replace wings on the bolt. Squeeze the wings to fit through the hole carefully. Once the wings pass the material they will automatically open. (B)
- Gently pull down on the pier base and carefully screw the bolt and tighten to ceiling. (C)
- Thread Pier Body over upper Pier Base. Finger tighten. (D)

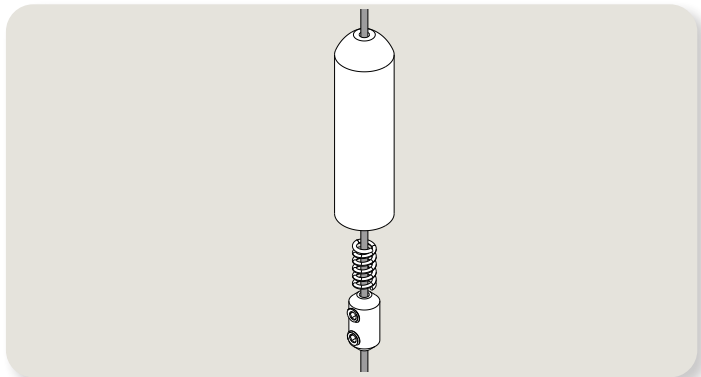
#### NOTE

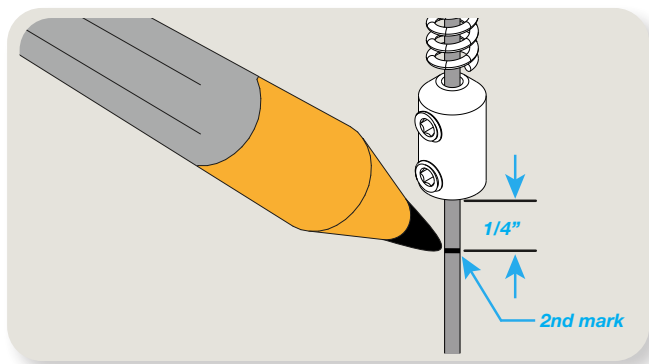
One side of the Mounting Plate fits Short Pier and the other side fits Long Pier Bases.



### 4 Install Cable & Cable Fittings

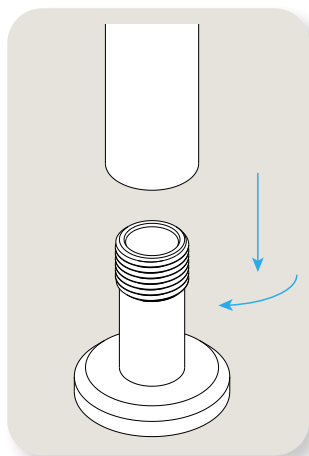
- Insert Barrel-End Cable through upper Pier Body and thread Pier Body over upper Pier Base. Finger tighten.
- With cable hanging in place, pull slack out of it and hold the cable to the floor immediately next to the lower Pier Base. Stand the lower Pier Body next to the cable. Using a fine-point marking pen, mark the cable at the shoulder of the Pier Body for 10 foot cables or at the tip of the Pier Body for 20 foot cables.
- Install hooks and fittings at this time on this cable. Only our Side Clamps, Mini Hook and Frame Stabilizer may be added to the cable after this step. Other Hooks need to be added before the next step.
- Insert cable through lower Pier Body, Spring and Cable Stop, in that order.
- Locate the Cable Stop so that the top of the Cable Stop is at the mark you made on the cable and tighten the set-screws.





## 4 Trim Cable Length

- Using a fine-point marking pen, make a second mark about 1/4" below the bottom of the Cable Stop. Using "Super Glue" (supplied in mentioned Cable Trim Kit), apply one or two drops to the mark. Allow 5-10 minutes to dry. DO NOT proceed until completely dry.
- Cut the cable on the second mark.



## 5 Install Lower Pier

- Thread the lower Pier Body over the lower Pier Base and tighten just until the cable seems tight. It is acceptable, even appropriate, to have a gap between the Pier Body and the disc at the bottom of the lower Pier Base. This will allow you to tighten the cable in the future as it stretches. Do not over-tighten.
- The pier and body must be engaged a minimum of two full revolutions.



Occasionally check the cable to see that it is tight. Tightening may be accomplished by further turning the lower Pier Body.



### NOTE:

Short and Long Piers may be purchased and installed separately, following these instructions.