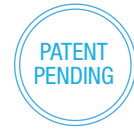




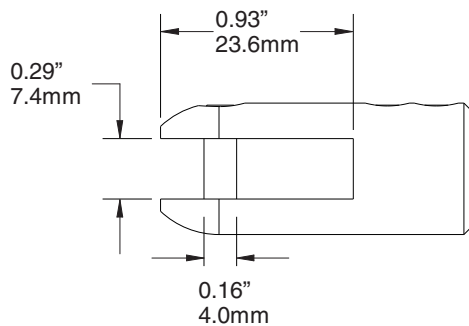
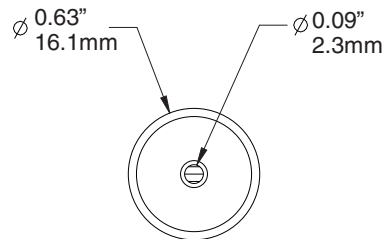
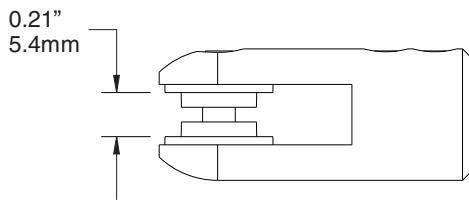
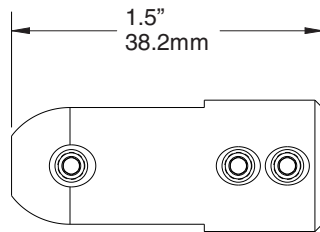
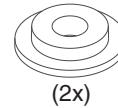
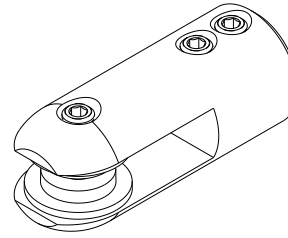
TOP CLAMP, SMALL
H3045



WEIGHT CAPACITY*
150 lbs.
68 Kg

FINISH
Anodized, Brushed aluminum
Set screws are stainless steel

INCLUDES
Glass Bushings (2x)



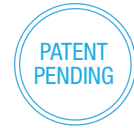
NOTE
Supplied with flat tipped set screws that must engage both walls of the clamp. Materials used in the clamp are to be prepared with through holes. Supplied bushings are to be used with glass, or other delicate panels. Glass panels are to be tempered monolithic glass.

*This is the connection between clamp and a steel cable. With all the variables in display panel substrate we cannot anticipate the potential strength of the clamp/panel connection.

ASHanging.com
866.935.6949



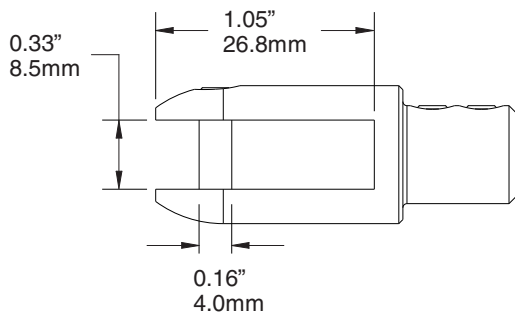
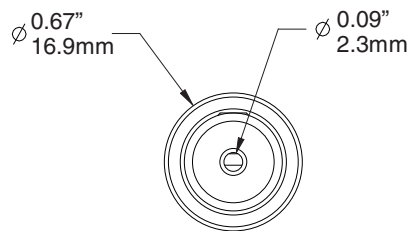
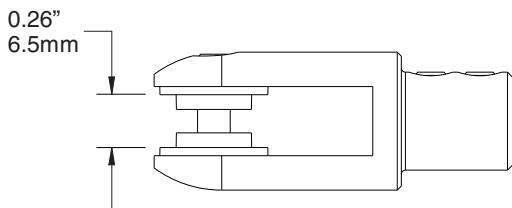
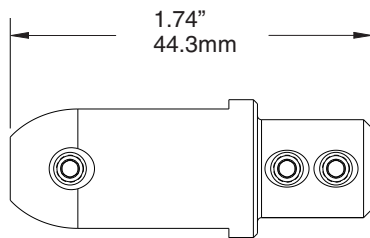
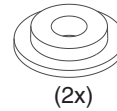
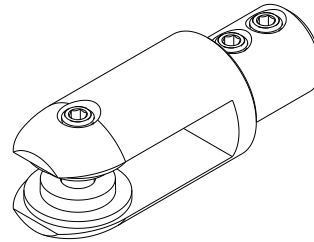
TOP CLAMP, MEDIUM H3046



WEIGHT CAPACITY*
150 lbs.
68 Kg

FINISH
Anodized, Brushed aluminum
Set screws are stainless steel

INCLUDES
Glass Bushings (2x)



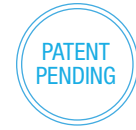
NOTE
Supplied with flat tipped set screws that must engage both walls of the clamp. Materials used in the clamp are to be prepared with through holes. Supplied bushings are to be used with glass, or other delicate panels. Glass panels are to be tempered monolithic glass.

*This is the connection between clamp and a steel cable. With all the variables in display panel substrate we cannot anticipate the potential strength of the clamp/panel connection.

ASHanging.com
866.935.6949



**TOP CLAMP, LARGE
H3047**



WEIGHT CAPACITY*
150 lbs.
68 Kg

FINISH
Anodized, Brushed aluminum
Set screws are stainless steel

INCLUDES
Glass Bushings (2x)

NOTE
Supplied with flat tipped set screws that must engage both walls of the clamp. Materials used in the clamp are to be prepared with through holes. Supplied bushings are to be used with glass, or other delicate panels. Glass panels are to be tempered monolithic glass.

*This is the connection between clamp and a steel cable. With all the variables in display panel substrate we cannot anticipate the potential strength of the clamp/panel connection.

ASHanging.com
866.935.6949

